



# SUBIC DRYDOCK CORPORATION

## SHIP REPAIR \* NEWBUILDINGS



### AFDF-21 FLOATING DRYDOCK

#### Principal Particulars

Length, Overall	60.96 m
Width, Overall	19.50 m
Depth of Pontoon	2.74 m
Height of Sidewall (Above Pontoon)	6.70 m
Light Draft	1.01 m
Length Over Keel Blocks	56.33 m
Width Over Keel Blocks	13.41 m
Maximum Raft Over Keel Blocks (3.5 ft)	4.87 m
FB at Sidewall at Full Submergence	0.76 m
Capacity / Rating	1,000 tons

**Makati Office:**  
18th Floor, Equitable Bank Tower  
8751 Paseo de Roxas, Salcedo Village  
Makati City, Philippines 1227  
Tel. No.: (632) 885-7740  
Fax Nos.: (632) 818-1128 \* 815-2293

**Subic Office:**  
Bldg. 17 Gridley Corner Schley Roads  
SRF Compound, Subic Bay Freeport Zone  
Philippines 2222  
Tel. No.: (047) 252-8183 to 85  
Fax No.: (047) 252-8201

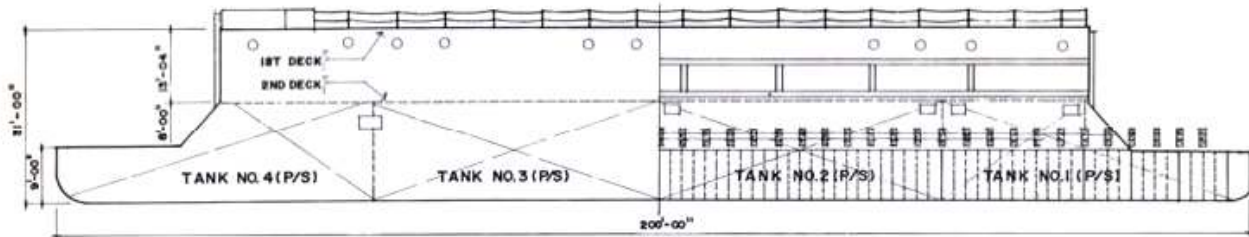


# SUBIC DRYDOCK CORPORATION

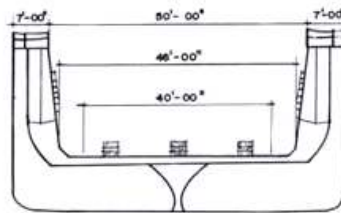
## SHIP REPAIR \* NEWBUILDINGS

### FLOATING DRYDOCK "AFDL-21"

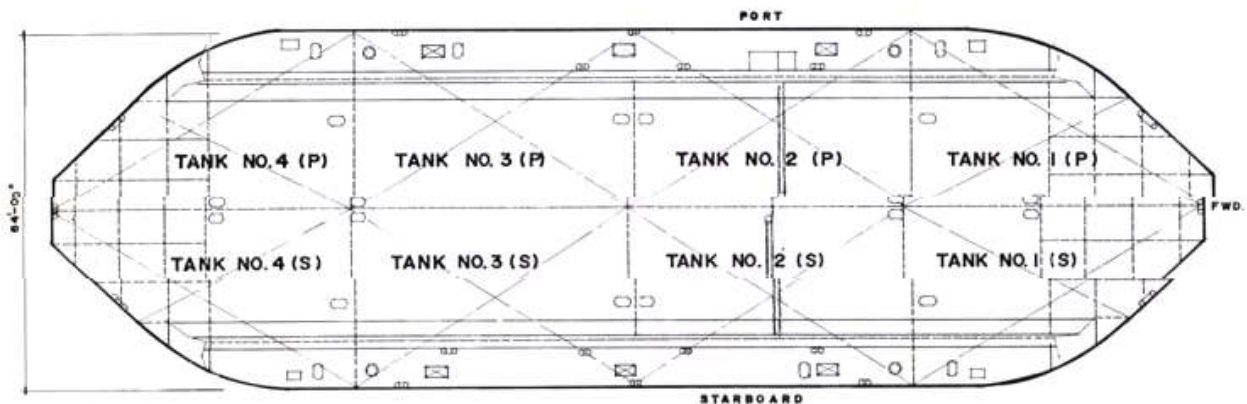
#### General Arrangement Plan



ELEVATION



END ELEVATION



PLAN

Makati Office: 18th Floor, Equitable Bank Tower  
8751 Paseo de Roxas, Salcedo Village  
Makati City, Philippines 1227  
Tel. No.: (632) 885-7740  
Fax Nos.: (632) 818-1128 \* 815-2293

Subic Office: Bldg. 17 Gridley Corner Schley Roads  
SRF Compound, Subic Bay Freeport Zone  
Philippines 2222  
Tel. No.: (047) 252-8183 to 85  
Fax No.: (047) 252-8201