



SUBIC DRYDOCK CORPORATION

SHIP REPAIR * NEWBUILDINGS



HERCULES-I FLOATING CRANE

Principal Particulars

BARGE DATA

Length Overall	42.67 m
Breath, Moulded	21.34 m
Depth, Moulded	3.81 m
Draft, Mean (full load)	1.91 m
Displacement (full load)	656 metric tons
Gross Tonnage	1,232
Net Tonnage	261

CRANE DATA

Boom Length	37.64 m
Main Hoist	Capacity (max.) 90 metric tons @ 24.4 meter radius 76 metric tons @ 31.8 meter radius SWL (certified) 65 metric tons @ 45° Speed 14 feet per minute
Auxiliary Hoist	SWL (certified) 25 metric tons @ 45° Speed 80 feet per minute
Crane Range	Revolving 360° @ 0.333 RPM

Makati Office:
18th Floor, Equitable Bank Tower
8751 Paseo de Roxas, Salcedo Village
Makati City, Philippines 1227
Tel. No.: (632) 885-7740
Fax Nos.: (632) 818-1128 * 815-2293

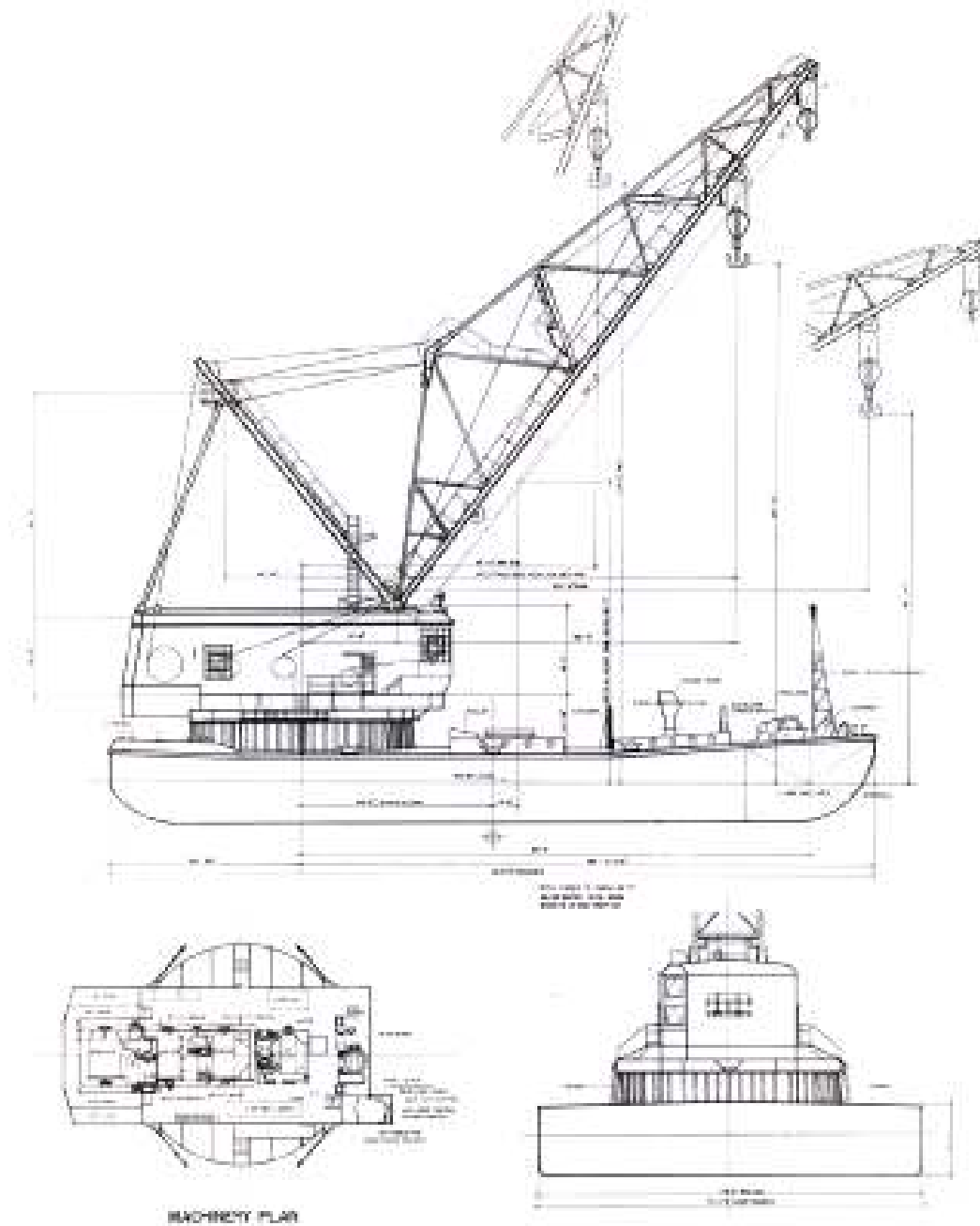
Subic Office:
Bldg. 17 Gridley Corner Schley Roads
SRF Compound, Subic Bay Freeport Zone
Philippines 2222
Tel. No.: (047) 252-8183 to 85
Fax No.: (047) 252-8201



SUBIC DRYDOCK CORPORATION

SHIP REPAIR * NEWBUILDINGS

FLOATING CRANE "HERCULES-I" General Arrangement Plan



Makati Office:
18th Floor, Equitable Bank Tower
8751 Paseo de Roxas, Salcedo Village
Makati City, Philippines 1227
Tel. No.: (632) 885-7740
Fax Nos.: (632) 818-1128 * 815-2293

Subic Office:
Bldg. 17 Gridley Corner Schley Roads
SRF Compound, Subic Bay Freeport Zone
Philippines 2222
Tel. No.: (047) 252-8183 to 85
Fax No.: (047) 252-8201