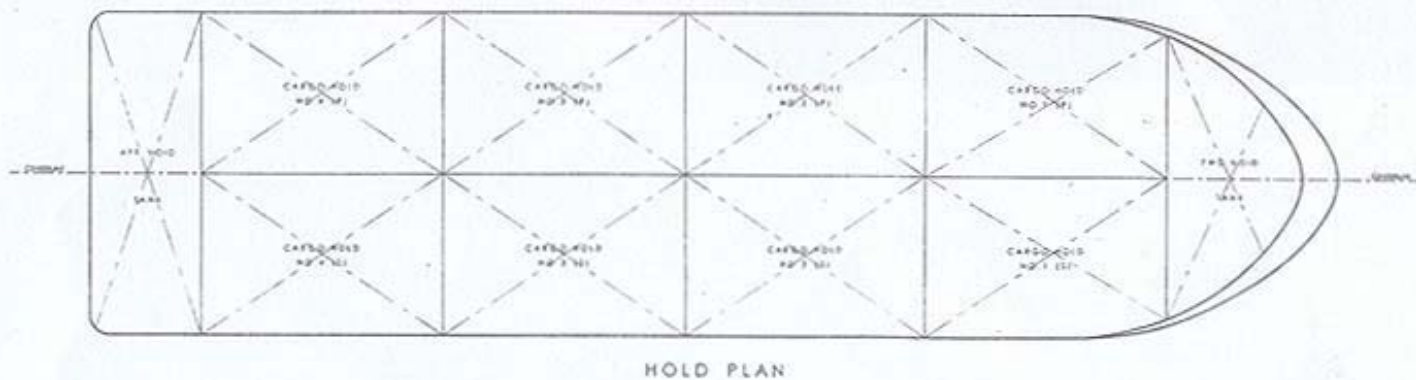
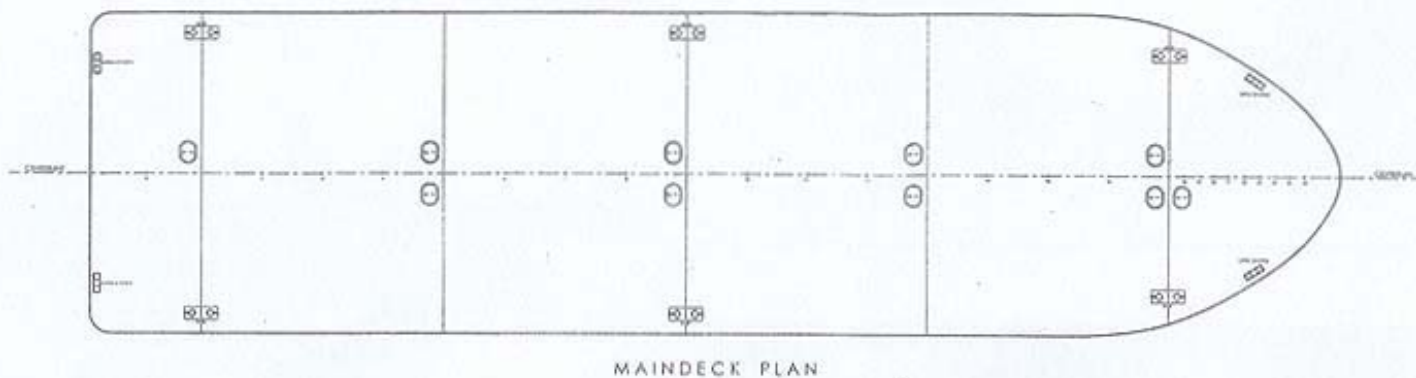
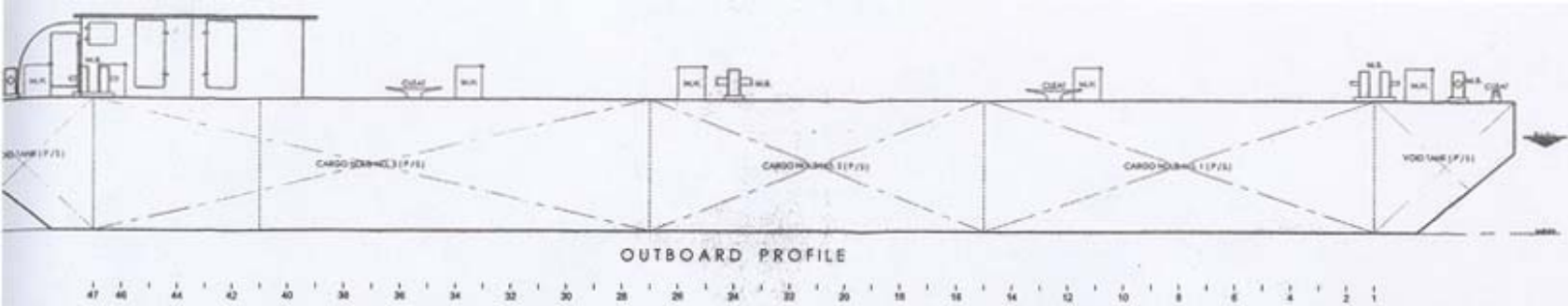


PARTICULARS

LENGTH OVER-ALL 124' - 00"
 BREADTH, moulded 32' - 00"
 DEPTH, moulded 11' - 00"

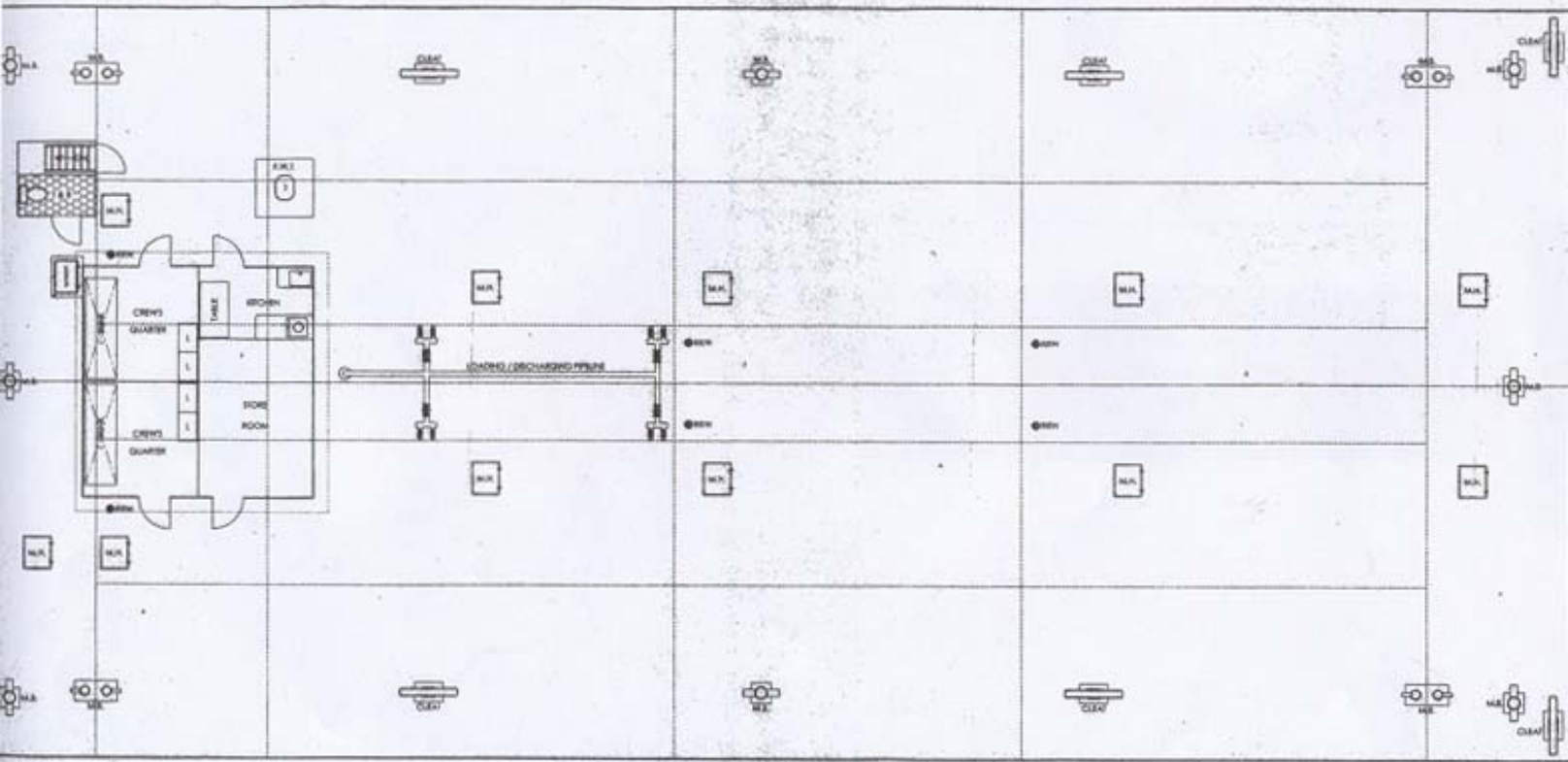


 WESTERN SHIPYARD SERVICES, INC. 21 E. Naval Street, San Jose, Navotas Metro Manila, 1485 Philippines	
Name of Vessel:	
TM - 755	
Sheet Content:	
GENERAL ARRANGEMENT PLAN	
Drawn by: G.L. Arango	Scale: 1/2" = 1'-00"
Checked by: <i>[Signature]</i>	REG. NAVAL ARCHITECT & MARINE ENGINEER
Approved by: <i>[Signature]</i>	U.C. No. 921 PIR No. 5083555 Date: 1/18/04
Owner / Operator:	Sheet No.:
MALAYAN TOWAGE and SALVAGE CORP	Drawing No.:



PARTICULARS

LENGTH OVERALL	112'-00"
BREADTH	52'-00"
DEPTH	9'-06"
Draft	7'-00"



WESTERN SHIPYARD SERVICES, INC.
 21 E. Naval Street, San Jose, Navotas Metro Manila, 1405 Philippines

Name of Vessel: **BARGE TM - 800**

Sheet Content: **GENERAL ARRANGEMENT PLAN**

Drawn by: _____
 Checked by: _____
 Approved by: _____

Owner / Operator: **MALAYAN TOWAGE and SAVAGE CORP.**

Scale: 2 1/2" = 1'-00"
 Sheet No.: _____
 Drawing No.: _____

REG. NAVAL ARCHITECT & MARINE ENGINEER
 Lic. No. 557, PIR No. 200506 Date: 12/1/06